

THREE DIVER PORTABLE PANEL SY-3DAP-D040-SF / BF



PART NO : SY-3DAP-D040
 Three diver panel without radio

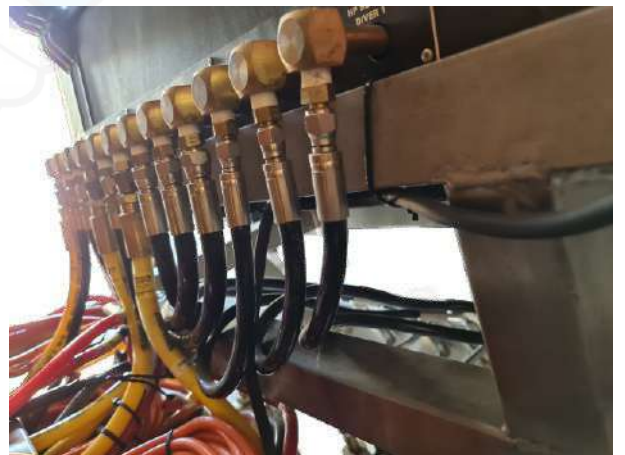


THREE DIVER PORTABLE PANEL SY-3DAP-D040-SF / BF

SF - DIVING PANEL WITH D1/D2/D3 INLET FITTINGS (AIR SUPPLIES HP/LP) ON LEFT SIDE AND D1/D2/D3 OUTLET FITTINGS (TO DIVER) ON RIGHT SIDE




DIVING PANEL WITH DIVER 1 AND DIVER 2 INLET AND OUTLET FITTINGS FROM THE BACKSIDE OF THE PANEL




THREE DIVER PORTABLE PANEL SY-3DAP-D040-SF / BF

Information Two Diver Panel

Case	Model 1650, Black, Interior (28.57" L x 17.52" W x 10.65" H), with wheels and handle, water, rust and dust proof), Pelican USA Exterior dimensions: 80.14 x 52.1 x 31.67cm (31.55" x 20.51" x 12.47") Interior dimensions: 72.16 x 44.2 x 27.03cm (28.41" x 17.40" x 10.64") Weight without foam: 10.9kg (24.03lbs)
------	---

1 x 0-230 fsw/70 msw Depth gauge, 3.5", 0.25 % accuracy, mirror scale, with calibration point, Diver 1, Color coded **Green** 

1 x 0-230 fsw/70 msw Depth gauge, 3.5", 0.25 % accuracy, mirror scale, with calibration point, Diver 2, Color coded **Blue** 

1 x 0-230 fsw/70 msw Depth gauge, 3.5", 0.25 % accuracy, mirror scale, with calibration point, Diver 3, Color coded **Red** 

Air Supplies	High pressure - Two independent HP inlet per diver Low Pressure : One independent LP inlet per diver
Regulator	1 x per diver, suitable for breathing air, Inlet : 6000 psi, outlet : 400 psi
Relief valves	0-250 psi on regulated diver supply line, 100 psi on pneumo gauges

Air supply ports:

Option 1 - SF	All fittings provided on both sides of case – Left side all inlet fittings for hp air, lp air, right side divers air supply and pneumo fittings.
Option 2 - BF	All fittings provided from behind the panel for inlets and outlets
Calibration	Inbuilt calibration points for pneumo gauges

SYNERGY SURFACE DIVING HOSES AND UMBILICALS SY-AQUAFLOW



Diving Umbilical with protective outer sheet



Diving Umbilical with spiral wrap



Diving Umbilical without protective outer sheet



CLASS WITNESS CERTIFICATES

CERTIFICATE
OF TEST and THOROUGH EXAMINATION OF LIFTING EQUIPMENT

INSPECTOR: **DA 4.21.057.150222.CCU.004.SK**

OWNER: **SYNERGY INNOVATIVE DIVING EQUIPMENT TRADING LLC, DUBAI, UAE**

ITEM: **SCUBA REPLACEMENT PACKAGE FRAME**

BUREAU VERITAS, acting under the General Conditions of Service of the Society, situated on 15, 16, 17, 18, 19, 20, 21, 22, 23, 24, 25, 26, 27, 28, 29, 30, 31, 32, 33, 34, 35, 36, 37, 38, 39, 40, 41, 42, 43, 44, 45, 46, 47, 48, 49, 50, 51, 52, 53, 54, 55, 56, 57, 58, 59, 60, 61, 62, 63, 64, 65, 66, 67, 68, 69, 70, 71, 72, 73, 74, 75, 76, 77, 78, 79, 80, 81, 82, 83, 84, 85, 86, 87, 88, 89, 90, 91, 92, 93, 94, 95, 96, 97, 98, 99, 100, 101, 102, 103, 104, 105, 106, 107, 108, 109, 110, 111, 112, 113, 114, 115, 116, 117, 118, 119, 120, 121, 122, 123, 124, 125, 126, 127, 128, 129, 130, 131, 132, 133, 134, 135, 136, 137, 138, 139, 140, 141, 142, 143, 144, 145, 146, 147, 148, 149, 150, 151, 152, 153, 154, 155, 156, 157, 158, 159, 160, 161, 162, 163, 164, 165, 166, 167, 168, 169, 170, 171, 172, 173, 174, 175, 176, 177, 178, 179, 180, 181, 182, 183, 184, 185, 186, 187, 188, 189, 190, 191, 192, 193, 194, 195, 196, 197, 198, 199, 200, 201, 202, 203, 204, 205, 206, 207, 208, 209, 210, 211, 212, 213, 214, 215, 216, 217, 218, 219, 220, 221, 222, 223, 224, 225, 226, 227, 228, 229, 230, 231, 232, 233, 234, 235, 236, 237, 238, 239, 240, 241, 242, 243, 244, 245, 246, 247, 248, 249, 250, 251, 252, 253, 254, 255, 256, 257, 258, 259, 260, 261, 262, 263, 264, 265, 266, 267, 268, 269, 270, 271, 272, 273, 274, 275, 276, 277, 278, 279, 280, 281, 282, 283, 284, 285, 286, 287, 288, 289, 290, 291, 292, 293, 294, 295, 296, 297, 298, 299, 300, 301, 302, 303, 304, 305, 306, 307, 308, 309, 310, 311, 312, 313, 314, 315, 316, 317, 318, 319, 320, 321, 322, 323, 324, 325, 326, 327, 328, 329, 330, 331, 332, 333, 334, 335, 336, 337, 338, 339, 340, 341, 342, 343, 344, 345, 346, 347, 348, 349, 350, 351, 352, 353, 354, 355, 356, 357, 358, 359, 360, 361, 362, 363, 364, 365, 366, 367, 368, 369, 370, 371, 372, 373, 374, 375, 376, 377, 378, 379, 380, 381, 382, 383, 384, 385, 386, 387, 388, 389, 390, 391, 392, 393, 394, 395, 396, 397, 398, 399, 400, 401, 402, 403, 404, 405, 406, 407, 408, 409, 410, 411, 412, 413, 414, 415, 416, 417, 418, 419, 420, 421, 422, 423, 424, 425, 426, 427, 428, 429, 430, 431, 432, 433, 434, 435, 436, 437, 438, 439, 440, 441, 442, 443, 444, 445, 446, 447, 448, 449, 450, 451, 452, 453, 454, 455, 456, 457, 458, 459, 460, 461, 462, 463, 464, 465, 466, 467, 468, 469, 470, 471, 472, 473, 474, 475, 476, 477, 478, 479, 480, 481, 482, 483, 484, 485, 486, 487, 488, 489, 490, 491, 492, 493, 494, 495, 496, 497, 498, 499, 500, 501, 502, 503, 504, 505, 506, 507, 508, 509, 510, 511, 512, 513, 514, 515, 516, 517, 518, 519, 520, 521, 522, 523, 524, 525, 526, 527, 528, 529, 530, 531, 532, 533, 534, 535, 536, 537, 538, 539, 540, 541, 542, 543, 544, 545, 546, 547, 548, 549, 550, 551, 552, 553, 554, 555, 556, 557, 558, 559, 560, 561, 562, 563, 564, 565, 566, 567, 568, 569, 570, 571, 572, 573, 574, 575, 576, 577, 578, 579, 580, 581, 582, 583, 584, 585, 586, 587, 588, 589, 590, 591, 592, 593, 594, 595, 596, 597, 598, 599, 600, 601, 602, 603, 604, 605, 606, 607, 608, 609, 610, 611, 612, 613, 614, 615, 616, 617, 618, 619, 620, 621, 622, 623, 624, 625, 626, 627, 628, 629, 630, 631, 632, 633, 634, 635, 636, 637, 638, 639, 640, 641, 642, 643, 644, 645, 646, 647, 648, 649, 650, 651, 652, 653, 654, 655, 656, 657, 658, 659, 660, 661, 662, 663, 664, 665, 666, 667, 668, 669, 670, 671, 672, 673, 674, 675, 676, 677, 678, 679, 680, 681, 682, 683, 684, 685, 686, 687, 688, 689, 690, 691, 692, 693, 694, 695, 696, 697, 698, 699, 700, 701, 702, 703, 704, 705, 706, 707, 708, 709, 710, 711, 712, 713, 714, 715, 716, 717, 718, 719, 720, 721, 722, 723, 724, 725, 726, 727, 728, 729, 730, 731, 732, 733, 734, 735, 736, 737, 738, 739, 740, 741, 742, 743, 744, 745, 746, 747, 748, 749, 750, 751, 752, 753, 754, 755, 756, 757, 758, 759, 760, 761, 762, 763, 764, 765, 766, 767, 768, 769, 770, 771, 772, 773, 774, 775, 776, 777, 778, 779, 780, 781, 782, 783, 784, 785, 786, 787, 788, 789, 790, 791, 792, 793, 794, 795, 796, 797, 798, 799, 800, 801, 802, 803, 804, 805, 806, 807, 808, 809, 810, 811, 812, 813, 814, 815, 816, 817, 818, 819, 820, 821, 822, 823, 824, 825, 826, 827, 828, 829, 830, 831, 832, 833, 834, 835, 836, 837, 838, 839, 840, 841, 842, 843, 844, 845, 846, 847, 848, 849, 850, 851, 852, 853, 854, 855, 856, 857, 858, 859, 860, 861, 862, 863, 864, 865, 866, 867, 868, 869, 870, 871, 872, 873, 874, 875, 876, 877, 878, 879, 880, 881, 882, 883, 884, 885, 886, 887, 888, 889, 890, 891, 892, 893, 894, 895, 896, 897, 898, 899, 900, 901, 902, 903, 904, 905, 906, 907, 908, 909, 910, 911, 912, 913, 914, 915, 916, 917, 918, 919, 920, 921, 922, 923, 924, 925, 926, 927, 928, 929, 930, 931, 932, 933, 934, 935, 936, 937, 938, 939, 940, 941, 942, 943, 944, 945, 946, 947, 948, 949, 950, 951, 952, 953, 954, 955, 956, 957, 958, 959, 960, 961, 962, 963, 964, 965, 966, 967, 968, 969, 970, 971, 972, 973, 974, 975, 976, 977, 978, 979, 980, 981, 982, 983, 984, 985, 986, 987, 988, 989, 990, 991, 992, 993, 994, 995, 996, 997, 998, 999, 1000.

Industry & Facilities Division
Third Party Inspection Report
Page 5 of 5

INSPECTION REPORT No.: **DBA_4.21.057.150222.004.SK** Revision No: **0**

ABSTRACT-01

Inspection Details:

- Witnessed Parameters and pressure test of three drive portable panel with the following details:

Description:	Three Drive Portable Panel
Country of origin:	U.A.E
Manufacturer's serial No.:	TRFD00481
Year of Manufacture:	July 2022
Design pressure:	1.1 MPa (psi) (15.758 bar)
Test pressure:	1.1 MPa (psi) (15.758 bar)
Pressure Test Date:	15.07.2022

Pneumatic Test:

- Parameters over pressure test of Three drive portable panel No. TRFD00481 has been witnessed as per the approved procedure and found the following:
 - Test Pressure gauge calibration certificate was reviewed and found satisfactory.
 - Leak Pressure of 150 psi (1.1 MPa) of WPY was applied to the test pressure piping of Three drive portable panel for 30 mins, no leaks found, satisfactory at time of inspection.
 - High Pressure of 2100 psi (1.1 MPa) of WPY was applied to the test pressure piping of Three drive portable panel for 30 mins no leaks found, satisfactory at time of inspection.
 - Soop calibration test was performed on pressure, strain gauges, no leakage (leak test) at time of inspection. Results satisfactory.

END OF REPORT

Industry & Facilities Division
Third Party Inspection Report
Page 3 of 5

INSPECTION REPORT No.: **DBA_4.21.057.150222.004.SK** Revision No: **0**

- Details of Inspection Activities carried out with reference to ITP:
 - Visual inspection of three drive portable panel & found satisfactory
 - Verified the serial No. TRFD00481 of three drive portable panel
 - Witnessed pressure test of three drive portable panel as per Annexure - 01 & found satisfactory at the time of inspection
- Confirmation of certificates:
 - Verified calibration certificates of measuring instruments and found satisfactory

Details of Non-Conformities and Remedial Actions

Item	Description	Status	Raised on	Report No.	Closed on	Report No.	Comments
NA							

HEALTH, SAFETY ENVIRONMENT COMMENTS

Compliance with Occupational Safety and Health (OSHA) standards during the inspection.

Controlled 2 critical safety check list & No Safety Concerns were found at the time of inspection.

NON CONFORMITIES

Item	Description	Status	Raised on	Report No.	Closed on	Report No.	Comments
NA							

PUNCH LIST ITEMS

Item	Description	Status	Raised on	Report No.	Closed on	Report No.	Comments
NA							

Industry & Facilities Division
Third Party Inspection Report
Page 4 of 5

INSPECTION REPORT No.: **DBA_4.21.057.150222.004.SK** Revision No: **0**

INSPECTION DETAILS

Witnessed Parameters and pressure test of three drive portable panel with the following details:

Description:	Three Drive Portable Panel
Country of origin:	U.A.E
Manufacturer's serial No.:	TRFD00481
Year of Manufacture:	July 2022
Design pressure:	1.1 MPa (psi) (15.758 bar)
Test pressure:	1.1 MPa (psi) (15.758 bar)
Pressure Test Date:	15.07.2022

REFERENCE DOCUMENTATION

Ref No.	Reference No.	Issue Date	Approved By	Issue
01	DBA_4.21.057.150222.004.SK	15.07.2022	[Signature]	Initial Issue

ATTENDANCE

Name	Position	Attendance
M. Syarifuddin	Inspector	Present
M. Syarifuddin	Inspector	Present

MEASURING & TESTING EQUIPMENT USED

Equipment Type	Equipment ID/Serial No.	Issue Date	Approved By	Issue
Pressure Gauge	15000000000000000000	15.07.2022	[Signature]	Initial Issue
High Pressure Gauge	15000000000000000000	15.07.2022	[Signature]	Initial Issue

DETAILS OF DEFECTS AND REMEDIAL ACTIONS

Item	Description	Status	Raised on	Report No.	Closed on	Report No.	Comments
NA							

Industry & Facilities Division
Third Party Inspection Report
Page 2 of 5

INSPECTION REPORT No.: **DBA_4.21.057.150222.004.SK** Revision No: **0**

INSPECTION DETAILS

Witnessed Parameters and pressure test of three drive portable panel with the following details:

Description:	Three Drive Portable Panel
Country of origin:	U.A.E
Manufacturer's serial No.:	TRFD00481
Year of Manufacture:	July 2022
Design pressure:	1.1 MPa (psi) (15.758 bar)
Test pressure:	1.1 MPa (psi) (15.758 bar)
Pressure Test Date:	15.07.2022

REFERENCE DOCUMENTATION

Ref No.	Reference No.	Issue Date	Approved By	Issue
01	DBA_4.21.057.150222.004.SK	15.07.2022	[Signature]	Initial Issue

ATTENDANCE

Name	Position	Attendance
M. Syarifuddin	Inspector	Present
M. Syarifuddin	Inspector	Present

MEASURING & TESTING EQUIPMENT USED

Equipment Type	Equipment ID/Serial No.	Issue Date	Approved By	Issue
Pressure Gauge	15000000000000000000	15.07.2022	[Signature]	Initial Issue
High Pressure Gauge	15000000000000000000	15.07.2022	[Signature]	Initial Issue

DETAILS OF DEFECTS AND REMEDIAL ACTIONS

Item	Description	Status	Raised on	Report No.	Closed on	Report No.	Comments
NA							

Industry & Facilities Division
Third Party Inspection Report
Page 1 of 5

INSPECTION REPORT No.: **DBA_4.21.057.150222.004.SK** Revision No: **0**

- Details of Inspection Activities carried out with reference to ITP:
 - Visual inspection of three drive portable panel & found satisfactory
 - Verified the serial No. TRFD00481 of three drive portable panel
 - Witnessed pressure test of three drive portable panel as per Annexure - 01 & found satisfactory at the time of inspection
- Confirmation of certificates:
 - Verified calibration certificates of measuring instruments and found satisfactory

Details of Non-Conformities and Remedial Actions

Item	Description	Status	Raised on	Report No.	Closed on	Report No.	Comments
NA							

HEALTH, SAFETY ENVIRONMENT COMMENTS

Compliance with Occupational Safety and Health (OSHA) standards during the inspection.

Controlled 2 critical safety check list & No Safety Concerns were found at the time of inspection.

NON CONFORMITIES

Item	Description	Status	Raised on	Report No.	Closed on	Report No.	Comments
NA							

PUNCH LIST ITEMS

Item	Description	Status	Raised on	Report No.	Closed on	Report No.	Comments
NA							

Industry & Facilities Division
Third Party Inspection Report
Page 4 of 5

INSPECTION REPORT No.: **DBA_4.21.057.150222.004.SK** Revision No: **0**

INSPECTION DETAILS

Witnessed Parameters and pressure test of three drive portable panel with the following details:

Description:	Three Drive Portable Panel
Country of origin:	U.A.E
Manufacturer's serial No.:	TRFD00481
Year of Manufacture:	July 2022
Design pressure:	1.1 MPa (psi) (15.758 bar)
Test pressure:	1.1 MPa (psi) (15.758 bar)
Pressure Test Date:	15.07.2022

REFERENCE DOCUMENTATION

Ref No.	Reference No.	Issue Date	Approved By	Issue
01	DBA_4.21.057.150222.004.SK	15.07.2022	[Signature]	Initial Issue

ATTENDANCE

Name	Position	Attendance
M. Syarifuddin	Inspector	Present
M. Syarifuddin	Inspector	Present

MEASURING & TESTING EQUIPMENT USED

Equipment Type	Equipment ID/Serial No.	Issue Date	Approved By	Issue
Pressure Gauge	15000000000000000000	15.07.2022	[Signature]	Initial Issue
High Pressure Gauge	15000000000000000000	15.07.2022	[Signature]	Initial Issue

DETAILS OF DEFECTS AND REMEDIAL ACTIONS

Item	Description	Status	Raised on	Report No.	Closed on	Report No.	Comments
NA							

Certifications

Provided with each panel

Manufacturer	Synergy certification
International	IMCA D040
Class	Bureau Veritas pressure test certificates
Warranty	1 year international manufacturer warranty
Weight	64 kg

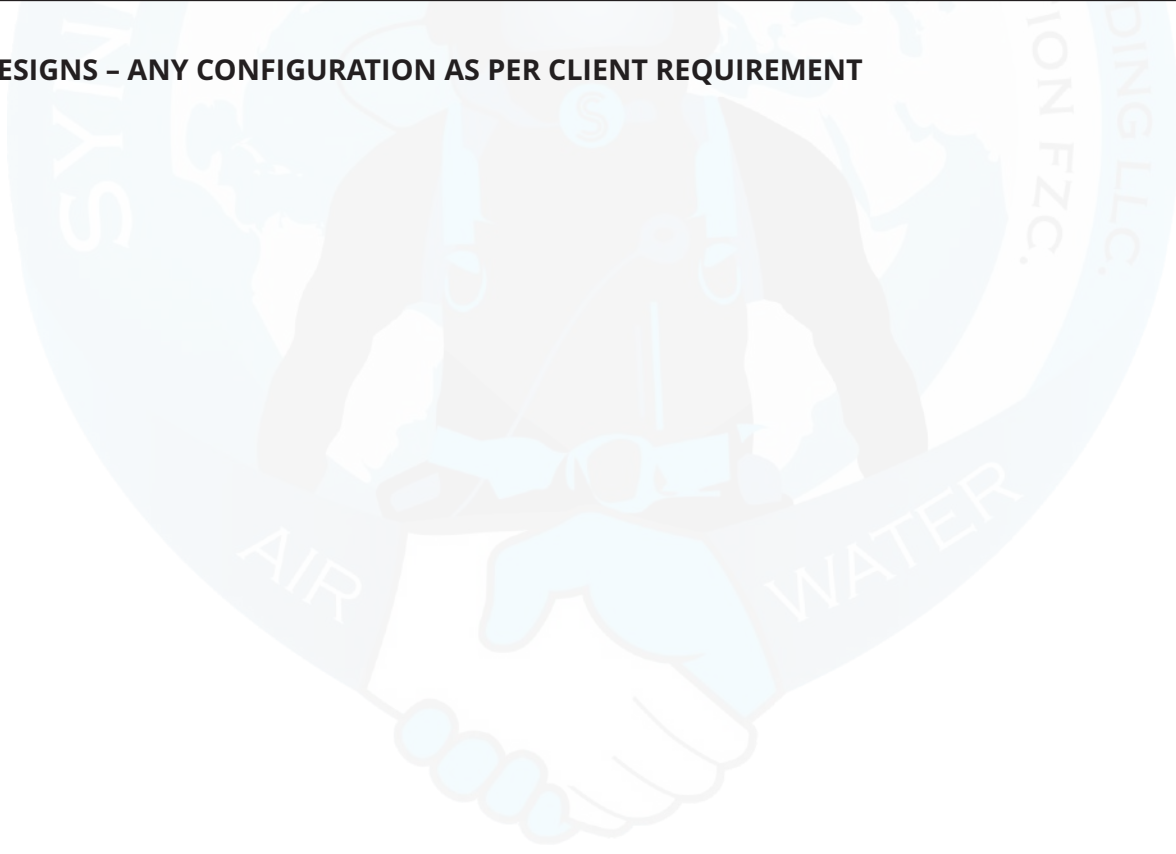
THREE DIVER PORTABLE PANEL SY-3DAP-D040-SF / BF

ORDERING INFORMATION

Sr.	Part Number	Description
1	SY-3DAP-D040-SF	Portable three diver panel, offshore, imca (no radio, no diver cctv), side inlet and outlet fittings
2	SY-3DAP-D040-BF	Portable three diver panel, offshore, imca (no radio, no diver cctv), back inlet and outlet fittings


Sr.	Part Number	Description
1	SY-UDA-0204	4 core Umbilical air/gas, pneumo, communication and video cables
2	SY-UDA-0103	3 core Umbilical air/gas, pneumo, communication
3	SY-ORANGESHEATH	Full braided protective outer sheath (for complete protection of umblicals)
4	SY-SPIRAL WRAP	Spiral wrap (in 10 mtr lengths) (for umblical protection)
	Fittings as below	
5	SY-386-PB-AIR	3/8"x 6 jic phosphor bronze reusable umbilical air/gas hose end fitting
6	SY-144-PB-PNEUMO	1/4" x 4 jic phosphor bronze reusable umbilical pneumo end fitting
7	SY-RMG-3-FS	Marsh marine, 3 pin, Female, 18"
8	SY-BANPLUGS-TWIN	Twin banana plugs surface communication end fitting (Red/Black)

BESPOKE DESIGNS - ANY CONFIGURATION AS PER CLIENT REQUIREMENT






THREE DIVER PORTABLE PANEL SY-3DAP-D040-SF / BF

Contact us

 29th Street, Amman Road, Behind Al Huraiz Est. For Industry,
Al Qusais, Industrial Area – 1,
Dubai, United Arab Emirates

-  Tel : 009714 2580533 
-  Fax : 042516664 
-  UAE : 00971505648178 
-  UK : 00447951966260 

-  Website : www.synergiequipment.com
-  Email : ram@synergiequipment.com
-  For Sale : info@synergiequipment.com

